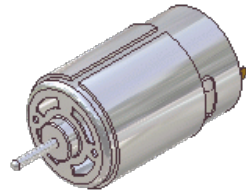


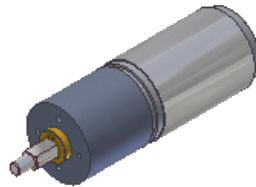
2.5" CIM

Peak power: 321 W
Free speed: 5500 RPM
Stall torque: 2.2 Nm
Stall current: 107 A
Free current: 2.3 A
Cooling: Thermal mass



Fisher Price

Peak power: 261W
Free speed: 2600RPM
Stall torque: 3.83Nm
Stall current: 89 A
Free current: .86A
Cooling: Centrifugal fan



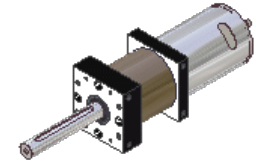
Globe Motor w/ GB

Peak power: 50 W
Free speed: 100 RPM
Stall torque: 19 Nm
Stall current: 21 A
Free current: .82 A
Gearbox: 117:1



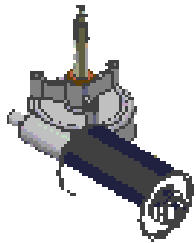
Window Motor (L/R)

Peak power: 22 W
Free speed: 92 RPM
Stall torque: 9.2 Nm
Stall current: 24.8 A
Free current: 2.8 A
Notes: thermal shut-off



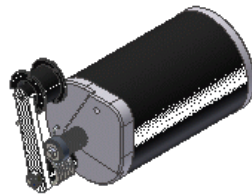
Banebots

Various motors and GB
with different specs,
similar to Globe



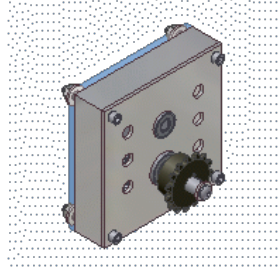
Van Door Motor

Peak power: 69 W
Free speed: 75 RPM
Stall torque: 35 Nm
Stall current: 40 A
Free current: 1.1 A



Big 3" CIM (mini-bike)

Peak power: 338 W
Free speed: 19000 RPM
Stall torque: .68 Nm
Stall current: 120 A
Free current: 3 A



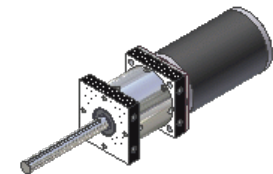
AndyMark Toughbox

Takes: 1x or 2x CIM
Reduction: 12.75:1
Type: Stack



Fisher Price Transmission

Takes: 1x Fisher Price
Reduction: 124:1
Type: Stack



Banebots CIM Gearboxes

Takes: 1 to 2x CIM
Reduction: 1:3 to 1:256
Type: Planetary